



## OUR PURPOSE IS EMBEDDED IN OUR IDENTITY!

 [www.dogagalvaniz.com](http://www.dogagalvaniz.com)

 [info@dogagalvaniz.com](mailto:info@dogagalvaniz.com)

 0412 504 83 70 - 0541 364 25 68

 Yayaş Mah. Elaziğ Yolu 22nd Km, 1st Organized Industrial Zone, 10th Street No: 3/1, Yenişehir / Diyarbakır

# ABOUT US

Doğa Galvaniz was established in 2012 with the goal of becoming a leader in the Turkish metal industry. Growing steadily through continuous investments, the company obtained two investment incentive certificates between 2013 and 2016, launching production in a 6,400 m<sup>2</sup> enclosed facility and creating employment for 100 people. In 2020, it completed the construction of its hot-dip galvanizing plant within 10 months and began production in an 8,400 m<sup>2</sup> enclosed space, expanding its workforce to 250 employees.

Operating on a 40-decare site with a 14,800 m<sup>2</sup> enclosed facility in the Diyarbakır Organized Industrial Zone, the company maintains a modern and environmentally friendly production approach with an annual galvanizing capacity of 80,000 tons of steel. Its product range includes steel structures, lighting poles, highway guardrail systems, power transmission lines, and GSM towers.





## **VISION**

Our goal is hidden in our name... To become the most modern and highest-quality facility in our field in Turkey.

## **MISSION**

To deliver high-quality products and services by using modern, safe, and environmentally friendly technologies in our field of operation.

## **OUR MANAGEMENT APPROACH**

We aim to be a reliable business partner for international institutions and contracting companies. With our team that is open to self-development and skilled in teamwork, we add value to the industry through our quality and innovative technology.

**CHAIRMAN OF  
THE BOARD**  

---

AHMET ELHANAY

# WHAT IS HOT-DIP GALVANIZING?

Metals such as iron and steel lose their physical and chemical properties over time due to exposure to atmospheric conditions, leading to corrosion. To prevent oxidation and protect the metal against corrosion, various coating methods are applied. Among these, one of the most durable is zinc coating through the hot-dip galvanizing method.

In the hot-dip galvanizing process, the metal material must first be cleaned of oil, rust, grease, and other contaminants on its surface before being immersed in a molten zinc bath at 450–500°C. For this purpose, a special surface preparation process is applied. This process is carried out in several detailed steps described below.

Hot-dip galvanizing has been widely used in industrial applications since the development of modern industry. This long-preferred coating method significantly extends the lifespan of metal

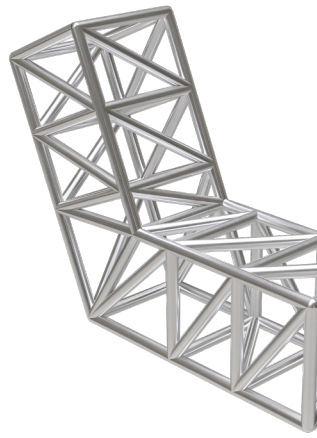
products and offers superior protection against corrosion.

In this process, steel is immersed into a kettle containing molten zinc. The surface of the steel reacts chemically with the molten zinc, forming a metallurgical alloy coating. This coating stands out for its high durability and long-lasting protection.

Among all galvanizing methods, hot-dip galvanizing is one of the most effective ways to protect steel. Thanks to this process, steel becomes much more resistant to environmental factors, and the coated products can be used for many years without the need for maintenance or repair.

## OUR KETTLE DIMENSIONS

12.20 m × 1.60 m × 3.00 m  
length × width × depth





# RE FE REN CES



# **WELDED TRANSMISSION** POLES

Galvanized welded low and medium voltage (LV-MV) steel poles are durable and long-lasting structural components used in various applications such as electrical transmission lines, lighting systems, and telecommunications infrastructure. These poles are manufactured from steel materials and are highly resistant to harsh weather conditions due to their high strength. Through the galvanization process, the surface of the poles is protected against rust, allowing them to be used reliably for many years. Produced in accordance with superior quality standards, LV-MV steel poles are known for their reliability and durability, making them a trusted choice in a wide range of industrial and infrastructure projects.



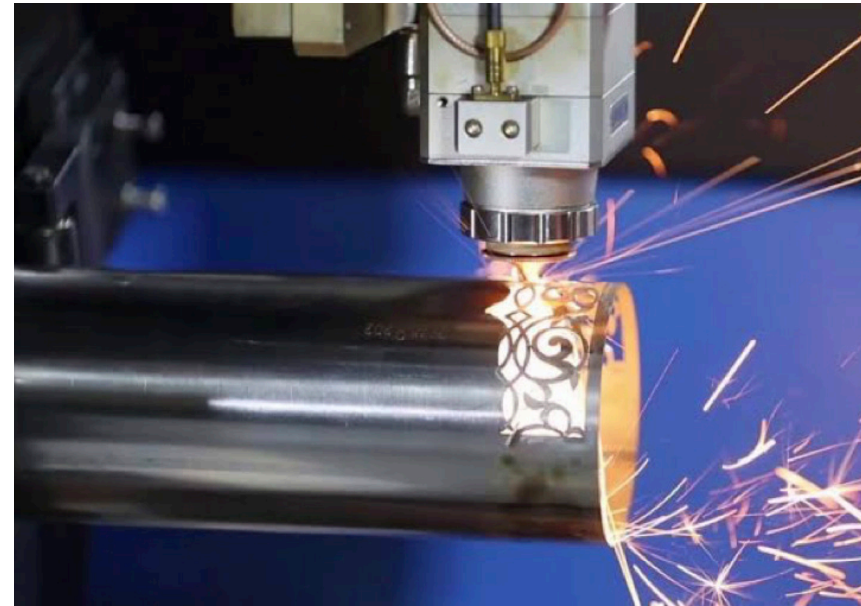
# **CUSTOM LASER CUTTING OF TUBES AND PROFILES**

Pipe cutting services are essential in nearly every industry. We recognize that pipes and profiles are widely used across sectors and offer various advantages for each specific field. At Doğa Galvaniz, we perform precise cuts using state-of-the-art machinery within our facility. Our advanced equipment, featuring unique capabilities, enables us to deliver burr-free, highly accurate cuts.

You can contact us for pipe and profile cutting services tailored to your technical drawings. The pipe cutting machines in our production line offer both time and cost savings. Ensuring perfection in every cut is our top priority. Thanks to the techniques we apply in pipe cutting, we provide a smooth and clean finish.

In our facility equipped with laser technology, we prepare your pipes for cutting by carry-

ing out a thorough cleaning process. As part of our laser pipe cutting service, pipes are positioned on the machine bed, and the cutting parameters are configured through computer-controlled software, enabling us to complete the operation efficiently and precisely.



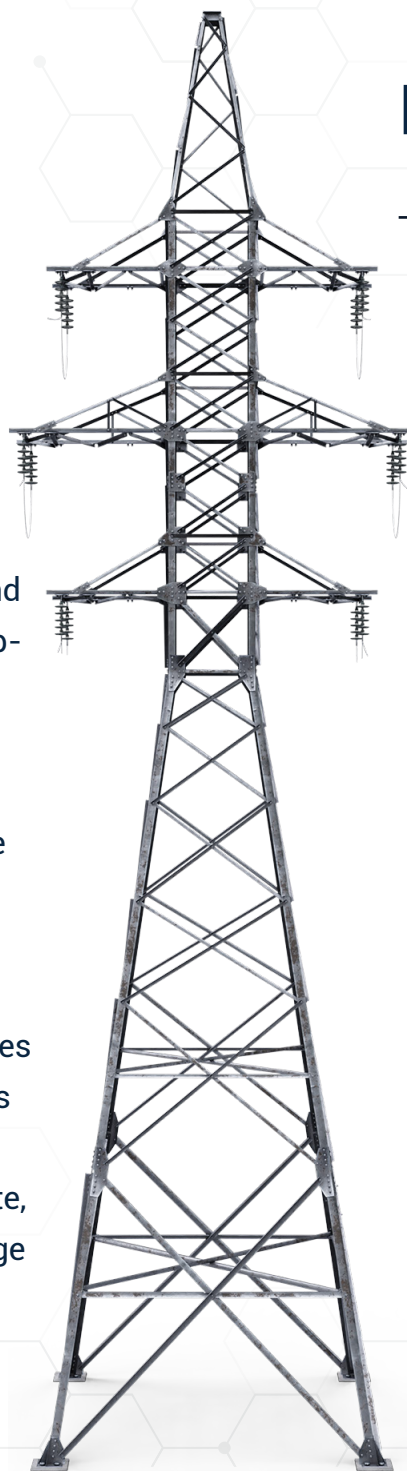
# **POWER TRANSMISSION LINES**

Doğa Galvaniz designs and manufactures low, medium, high, and ultra-high voltage transmission line poles in full compliance with TEDAŞ, TEİAŞ, and international specifications, based on the TIA/EIA-222F standards using fully automated CNC machinery.

In addition to the production of power transmission line poles for voltage ranges of 1.0–34.5 kV, 34.5–154.0 kV, 154.0–380.0 kV, and 380.0–800.0 kV, the company also manufactures transformer substations, switchyards, and other steel structures.

All products are coated using the hot-dip galvanizing method in accordance with TS 914 EN 1461 / ASTM A123 standards and are packaged and delivered under Incoterms 2000 conditions. Bolts, anchors, nuts, and washers comply with ISO 4016 standards.

Power transmission line poles are structures used to carry the lines that transmit electricity from power plants to transformer stations in consumption areas or from these stations to end users. Their design and production take into account parameters such as route, geographical and terrain conditions, environmental factors, voltage level, capacity, load-bearing strength, and intended use.



# **POWER TRANSMISSION LINE POLES**

Power transmission line poles are manufactured in lattice and polygonal types for voltages up to 1200 kV and are delivered galvanized and/or painted to provide resistance against atmospheric corrosion.





# LIGHTING POLES

## DECORATIVE LIGHTING POLES

### **Functionality and Lighting Solutions**

Decorative lighting poles, which can be integrated with LED technology or traditional lighting systems, enhance ambient illumination while providing energy efficiency. These poles offer the necessary lighting for nighttime safety without harming the environment.

### **An Aesthetic Contribution to Urban Landscapes**

Decorative lighting poles make cities, parks, and private spaces both safer and more visually appealing, offering an impressive visual experience. With their unique designs and functionality, decorative lighting poles are an excellent choice to transform your spaces.

## POLYGONAL LIGHTING POLES

The term “polygonal” is used for poles with angular cross-sections. These poles, produced using press brake machines, are easier to manufacture compared to those with circular cross-sections. They are commonly used in streets, avenues, shopping malls, parks, and along roads.

Doğa Galvaniz offers durable and cost-effective products with hot-dip galvanizing in accordance with EN 914 and ISO 1461 standards. Produc-

tion is carried out using S235 Jr/J2-EN10025 material in compliance with TEDAŞ and CE standards.

With its expert team and advanced technological infrastructure, the company prioritizes customer satisfaction and is recognized as a trusted brand in the industry. Additionally, as EMCİ Endüstri, we also manufacture various types of poles.



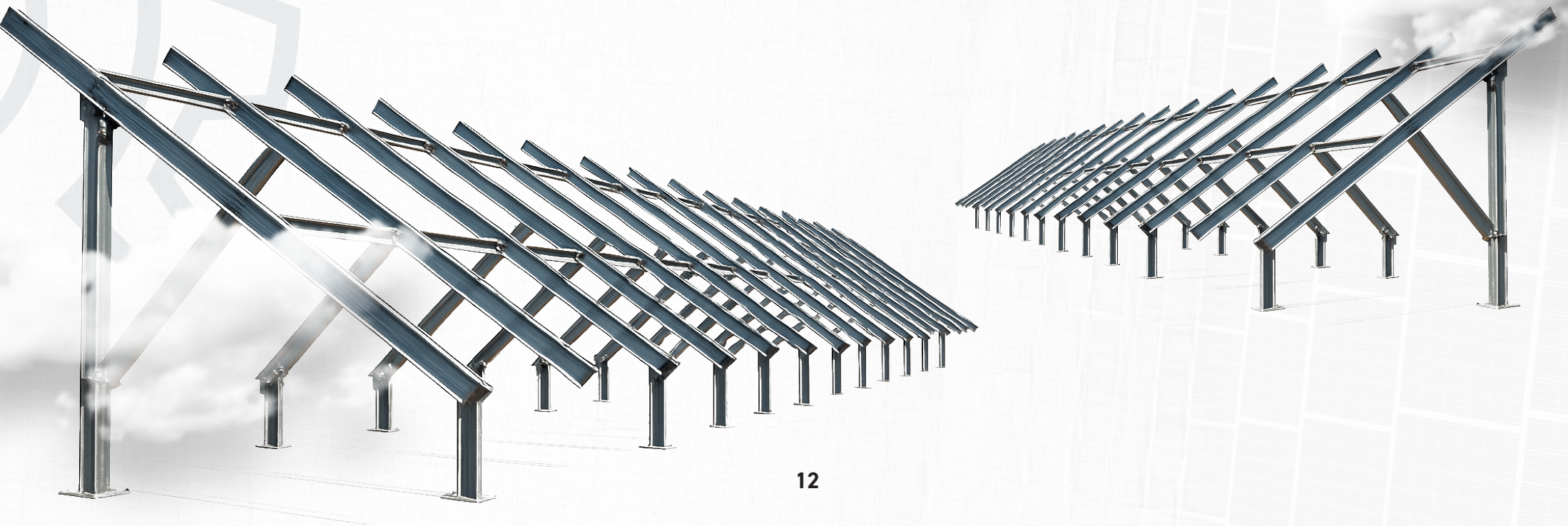


# RE FE REN CES



# SOLAR ENERGY SYSTEMS

Steel support structures made from all types of boxes, pipes, C, W, and profiles are designed and manufactured for both **CSP** and **PV** systems.

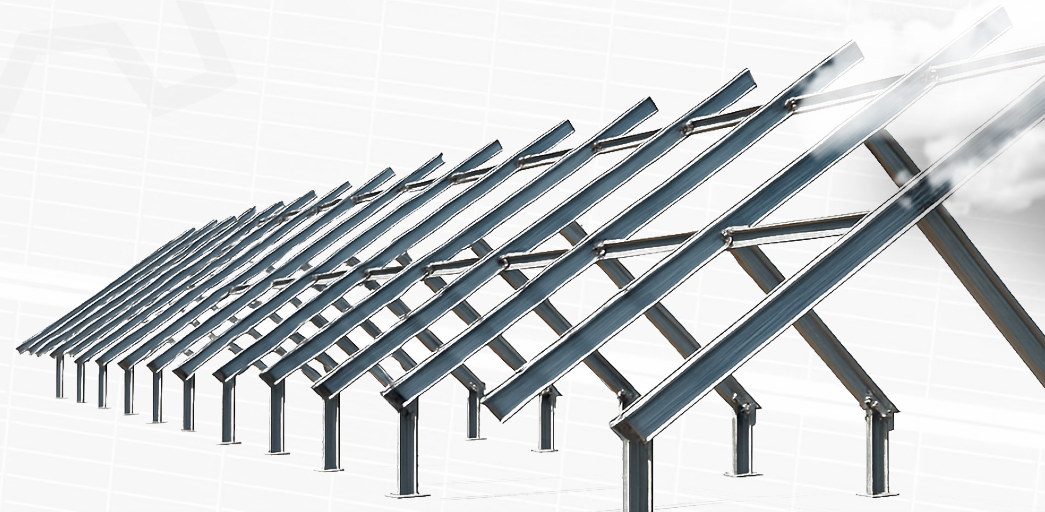


# **SOLAR POWER PLANTS**

## STEEL SUPPORT STRUCTURES

In hot-dip galvanized steel constructions, in addition to standard profiles (such as box, pipe, L, etc.), cold-formed steel profiles in C and U types can also be used. Thanks to their ease of assembly without welding and flexible sizing options, these products are widely preferred in solar power plant (SPP) projects.

“ We support our clients who are establishing solar power plants by offering custom profile manufacturing and the production of load-bearing structural systems, providing tailored system solutions to meet their specific needs.



# STEEL CONSTRUCTION

Since steel construction does not have a heavy structural load, it does not exert excessive pressure on the ground. For this reason, it is considered one of the safest types of structures in the event of an earthquake.

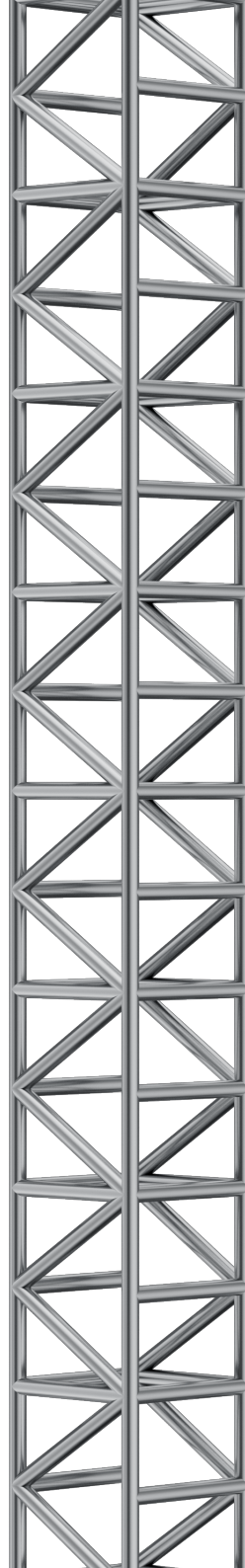
A properly prepared steel project is essential for steel construction. Clients want to see what the final result will look like before the work begins. Investment is valuable, but seeing the outcome of a project from the very beginning provides a unique sense of confidence and satisfaction.

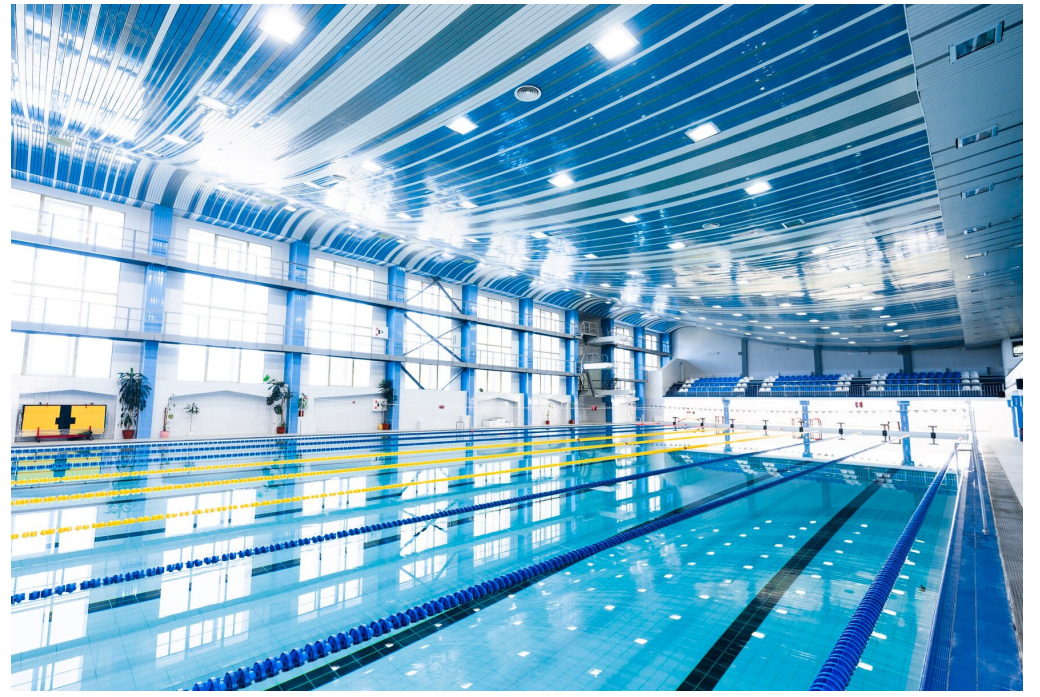
Therefore, in both light and heavy steel structure projects, planning is just as important as the investment itself. In steel construction projects, detailed calculations are carried out in advance to increase resistance to natural disasters such as earthquakes, floods, and strong winds. By optimiz-

ing material thicknesses, costs can be reduced—from light steel to heavy steel structures.

Our company stands out in the steel construction sector by undertaking projects that many firms avoid or are unwilling to do, such as steel hangars, light steel buildings, steel structures, open parking shelters, and steel roofs. We have pioneered the sector by offering free design and feasibility services, provided the project is awarded to us.

Steel structural systems, in which all load-bearing components are made of steel, are especially preferred in earthquake-prone regions. These systems are ideal for buildings requiring large spans and high ceilings and are commonly used in factory buildings, hangars, sports facilities, warehouses, and workshops.





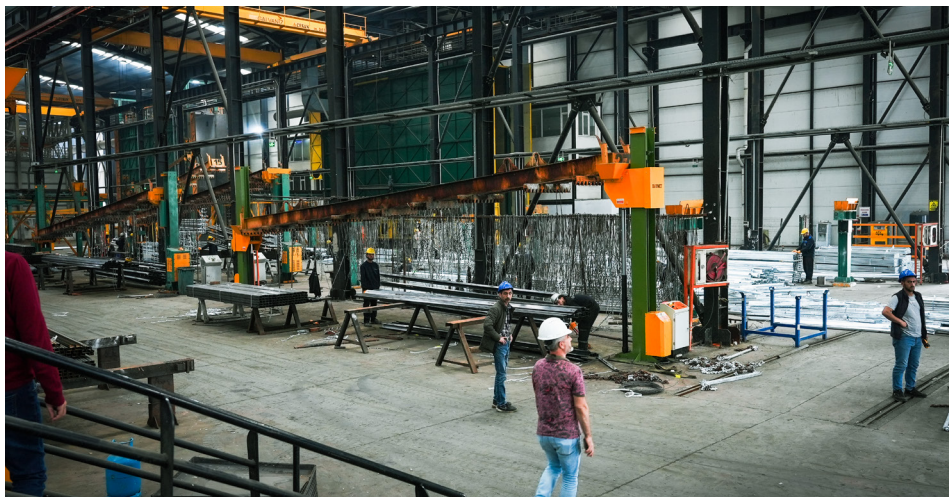
# RE FE REN CES



# TUBULAR POLES

Tubular poles are widely preferred in various applications such as lighting, power transmission lines, GSM, and surveillance systems due to their durable structure and long service life. Manufactured from high-strength steel and coated with hot-dip galvanizing, these poles are protected against corrosion and withstand harsh weather conditions.

Available in different diameters and lengths, tubular poles can be custom-produced to meet specific needs. They offer easy installation, providing a significant advantage for rapid field deployment. The right choice for high-quality and reliable tubular pole solutions!



# GSM POLES

GSM poles are one of the key infrastructure components that enable mobile communication networks to provide uninterrupted and high-quality service. These poles support base stations, offering wide coverage and enhancing communication between mobile devices.

The design and manufacturing of GSM poles take into account various parameters such as geographical conditions, wind load, ground struc-

ture, signal coverage area, load-bearing capacity, and environmental factors. Produced in either polygonal or lattice types, these poles are coated with hot-dip galvanizing to ensure

- resistance against atmospheric corrosion.

Manufactured in compliance with industry standards, GSM poles enhance mobile coverage in both urban and rural areas, ensuring seamless communication.



# WHAT IS A GROUNDING ROD?

Grounding rods are critical connection components with an angle profile structure that enable the transfer of electrical energy into the ground. Angle iron is commonly used in steel constructions as a connection material. Since grounding rods remain in constant contact with the soil, they must be coated with hot-dip galvanizing to ensure corrosion resistance. They can be manufactured in 2 m, 1.5 m, or 1 m lengths.

65x65x7mm Grounding Rod

65x65x6mm Grounding Rod

Grounding Rod

Used in electrical distribution systems, these rods provide grounding for high-voltage transmission lines, transformers, generators, and other electrical equipment. They are usually made from galvanized steel and produced in various sizes depending on soil depth, underground moisture, and other conditions.

A grounding rod typically consists of a pointed shaft, connection parts, and a rod head. The shaft is inserted into the ground to perform grounding. Connection parts link the shaft to the rod head, which

features multiple cable outlets.

Grounding rods ensure the safe operation of electrical distribution

systems. In high-voltage systems, they prevent damage caused by excessive voltage during grounding. They are also commonly used in lightning protection.

Proper selection and installation are essential. Factors like rod length, diameter, soil moisture and density, and the sharpness of the tip should be considered. Installation must be done correctly, and the depth of the rod should match soil conditions.

In conclusion, grounding rods are essential components in electrical distribution systems. When selected and installed properly, they support safe operation and prevent equipment damage.



# WHAT IS A PEDESTRIAN OVERPASS?

A pedestrian overpass is a raised structure, typically with stair access, that connects both sides of a road, allowing pedestrians to cross without encountering vehicle traffic. The primary purpose of an overpass is to maintain the continuous flow of traffic while ensuring pedestrian safety. Pedestrian overpasses are an essential part of sustainable transportation systems. They allow safe pedestrian movement without disrupting vehicular traffic. Overpasses can be designed as simple suspension bridges or in an arch shape, and may be constructed from timber, steel, or concrete. To ensure safety, barriers are typically installed along the sides of the overpass to prevent accidents or unauthorized access.

*We translate our modern and aesthetic approach in Doğa Galvaniz applications into long-term projects by combining practical implementation skills with high durability and safety standards.*



WITH THE GROWTH OF MODERN URBAN LIFE, THE INCREASING NUMBER OF INNER-CITY ROADS HAS MADE PEDESTRIAN SAFETY AND UNINTERRUPTED TRANSPORTATION A PRIORITY. AS A RESULT, PEDESTRIAN OVERPASS BRIDGE CONSTRUCTION HAS BECOME ESSENTIAL TO PREVENT TRAFFIC DISRUPTIONS AND ACCIDENTS. ESPECIALLY IN MAJOR CITIES, WE DESIGN OVERPASS BRIDGES—FREQUENTLY SEEN ON MAIN ARTERIAL ROADS—TO BE MODERN, AESTHETIC, DURABLE, AND FUNCTIONAL.

AT DOĞA GALVANIZ, WE BRING OUR MODERN AND AESTHETIC APPROACH INTO REAL-LIFE APPLICATIONS THROUGH PRACTICAL IMPLEMENTATION SKILLS AND A COMMITMENT TO HIGH DURABILITY AND SAFETY, DELIVERING LONG-TERM STRUCTURAL SOLUTIONS.



IN PEDESTRIAN BRIDGE PROJECTS, WE CONTINUE TO BE A TRUSTED SOLUTION PARTNER FOR PUBLIC INSTITUTIONS WHILE ALSO REMAINING A PREFERRED CHOICE FOR PRIVATE COMPANIES AND BUSINESSES.



# RE FE REN CES



# ROLL FORMING MACHINE

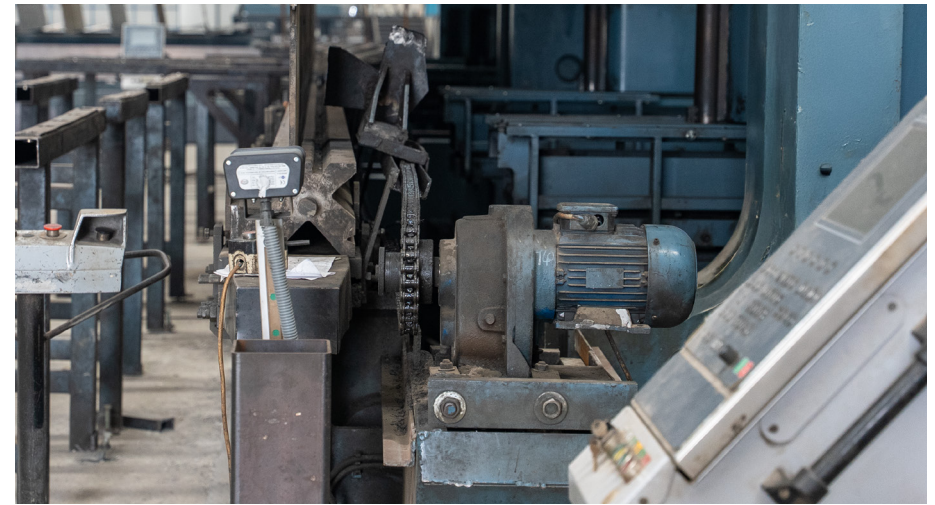
Roll forming machines are mass production systems that shape sheet metal into the desired form using roll-based dies, gradually forming the material step by step. These systems are used in the production of both open and closed profiles. Unlike press brakes, they are not limited by profile length, allowing for continuous, high-efficiency production.



RE  
FE  
REN  
CES

# ABKANT PRESS

A press brake is a sheet metal forming machine that bends flat metal materials into the desired shape. The metal sheet is shaped by applying downward force along a bend line. This process is typically performed using a bottom die and a top punch. The punch applies pressure to the sheet, bending it into the geometry of the die to achieve the intended form.



# RE FE REN CES



## **HIGHWAY SAFETY** BARRIER SYSTEMS



**Doğa Galvaniz** is one of the leading companies in the production of guardrails, utilizing the latest technology. It is capable of manufacturing systems in various protection classes and limits.

.

Guardrails are passive safety systems designed to keep vehicles on the road during traffic accidents, ensuring maximum protection of life and property. With superior safety, easy installation and dismantling, high performance, and low cost advantages, they are widely used on highways worldwide. However, the proper implementation of guardrails by a specialized and experienced company in accordance with relevant regulations is just as important as their presence.



# BENEFITS OF GUARDRAILS



- It makes the road more visible.
- It prevents pedestrians and animals from entering the road.
- It ensures the safety of the driver and passengers by preventing the vehicle from leaving the road.

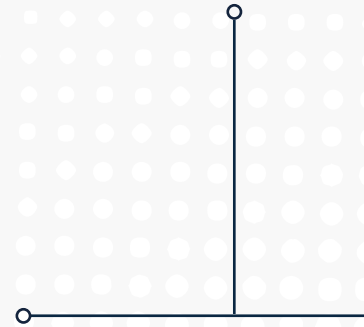


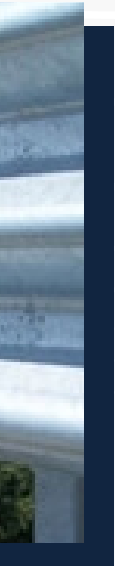


“



## OUR REFERENCES





**OUR PURPOSE IS EMBEDDED IN OUR IDENTITY!**



[www.dogagalvaniz.com](http://www.dogagalvaniz.com)



[info@dogagalvaniz.com](mailto:info@dogagalvaniz.com)



0412 504 83 70 - 0541 364 25 68



Yaytaş Mah. Elaziğ Yolu 22nd Km, 1st Organized Industrial Zone, 10th Street No: 3/1, Yenişehir / Diyarbakır